



SIMPLY HOMES

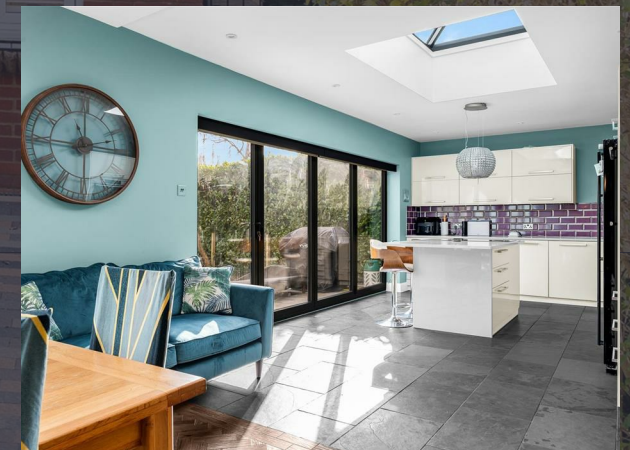
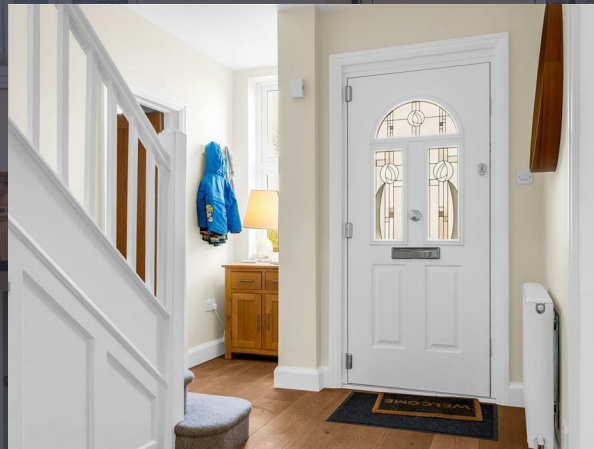
**Mckenzie Road**

Broxbourne EN10 7JH

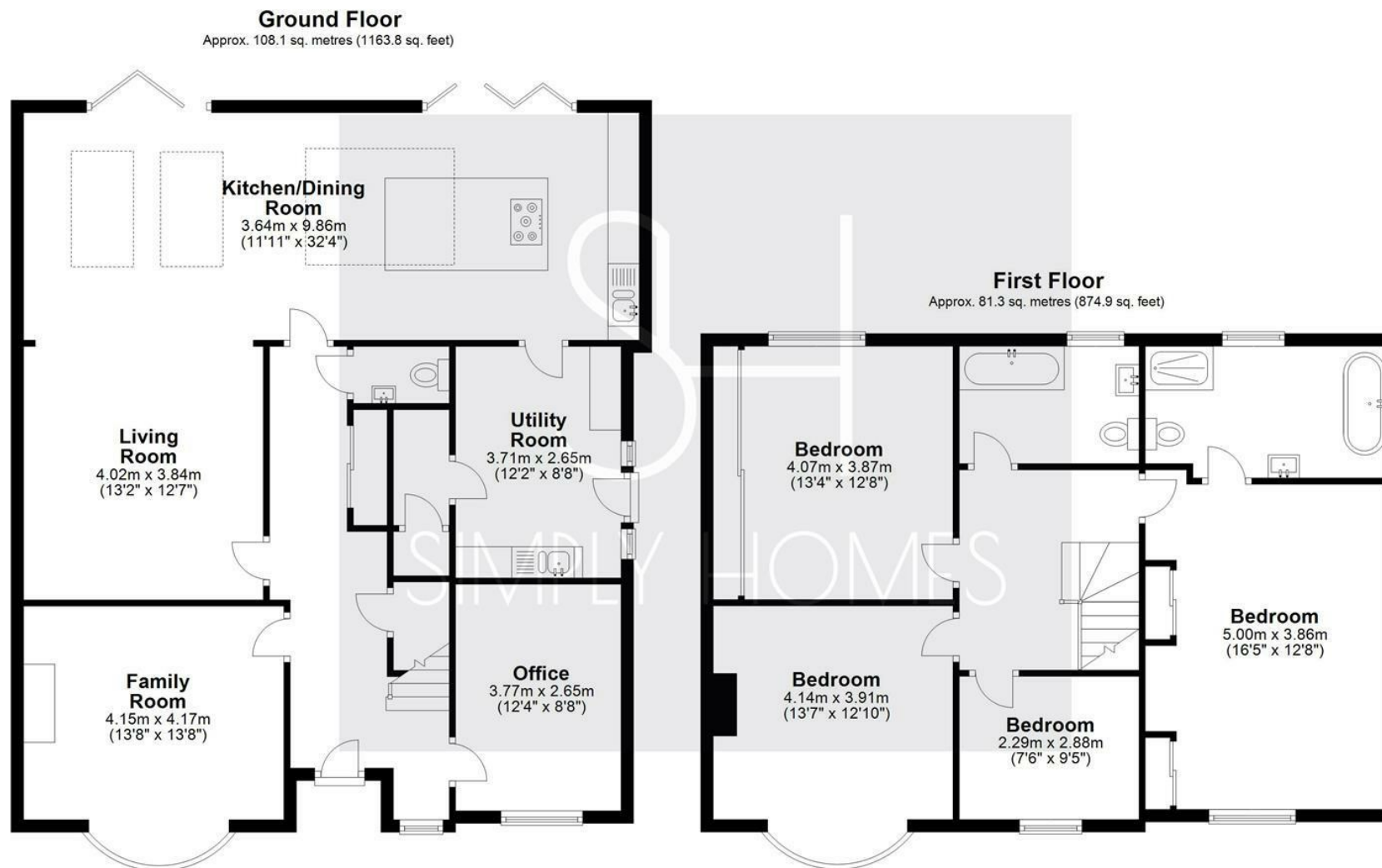


# Mckenzie Road

Broxbourne EN10 7JH







Total area: approx. 189.4 sq. metres (2038.7 sq. feet)



SIMPLY HOMES

115 Fore Street | Hertford | SG14 1AS | 01992 558 557 | [sales@simply-homes.co.uk](mailto:sales@simply-homes.co.uk) | [simply-homes.co.uk](http://simply-homes.co.uk) | Find us on

